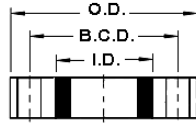
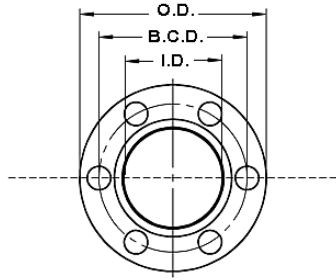


COMMON FLANGE DIMENSIONS

- 25 / 125 / 150 LBS DRILLING
- 250 / 300 LBS DRILLING



25 / 125 / 150 LBS DRILLING							
Nom. Dia.	Outside Dia. (O.D.)	Bolt Circle Dia. (B.C.D.)	# of Bolts	Dia. Of Holes <small>ANSI B15.1 Class 125 ANSI B16.24</small>	Dia. Of Holes <small>ANSI B16.1</small>	Dia. Of Holes <small>AWWA C207-78 Table 1 Class D Table 2 Class D Table 3 Class E</small>	Dia. Of Holes <small>AWWA C207-78 Table 1 Class B Table 2 Class B</small>
2	6.00	4.75	4	.75	—	.75	—
2.5	7.00	5.50	4	.75	—	.75	—
3	7.50	6.00	4	.75	—	.75	—
4	9.00	7.50	8	.75	.75	.75	.75
6	11.00	9.50	8	.875	.75	.875	.75
8	13.50	11.75	8	.875	.75	.875	.75
10	16.00	14.25	12	1.00	.75	1.00	.75
12	19.00	17.00	12	1.00	.75	1.00	.75
14	21.00	18.75	12	1.125	.875	1.125	.875
16	23.50	21.25	16	1.125	.875	1.125	.875
18	25.00	22.75	16	1.25	.875	1.25	.875
20	27.50	25.00	20	1.25	.875	1.25	.875
24	32.00	29.50	20	1.375	.875	1.375	.875
30	38.75	36.00	28	1.375	1.00	1.375	1.00
36	46.00	42.75	32	1.625	1.00	1.625	1.00
42	53.00	49.50	36	—	—	1.625	1.125
48	59.50	56.00	44	1.625	1.125	1.625	1.125
54	66.25	62.75	44	2.00	1.125	1.875	1.375
60	73.00	69.25	52	2.00	1.25	1.875	1.375

250 / 300 LB DRILLING				
<small>ANSI B16.1 Class 250 / ANSI B16.24 / ANSI B16.5 Class 300 / MSS SP-44 Class 300</small>				
Nom. Dia.	Outside Dia. (O.D.)	Bolt Circle Dia. (B.C.D.)	# of Bolts	Dia. Of Holes
2	6.50	5.00	8	.75
2.5	7.50	5.875	8	.875
3	8.25	6.625	8	.875
4	10.00	7.875	8	.875
6	12.50	10.625	12	.875
8	15.00	13.00	12	1.00
10	17.50	15.25	16	1.25
12	20.50	17.75	16	1.25
14	23.00	20.25	20	1.25
16	25.50	22.50	20	1.375
18	28.00	24.75	24	1.375
20	30.50	27.00	24	1.375
24	36.00	32.00	24	1.625
30	53.00	39.25	28	2.00*
36	50.00	46.00	32	2.25*
42	57.00*	52.75*	36*	2.25*
48	65.00*	60.75*	40*	2.25*
54	65.25	61.00	28	2.375
60	71.25	67.00	32	2.375

* Dimension shown does not meet MSS SP-44

Notes:

This table is intended for estimating purposes only. Applications vary, confirm all dimensions with your engineering department prior to ordering. Refer to the ASME B16.1-1989 standard for complete engineering and applications information. All dimensions are in

